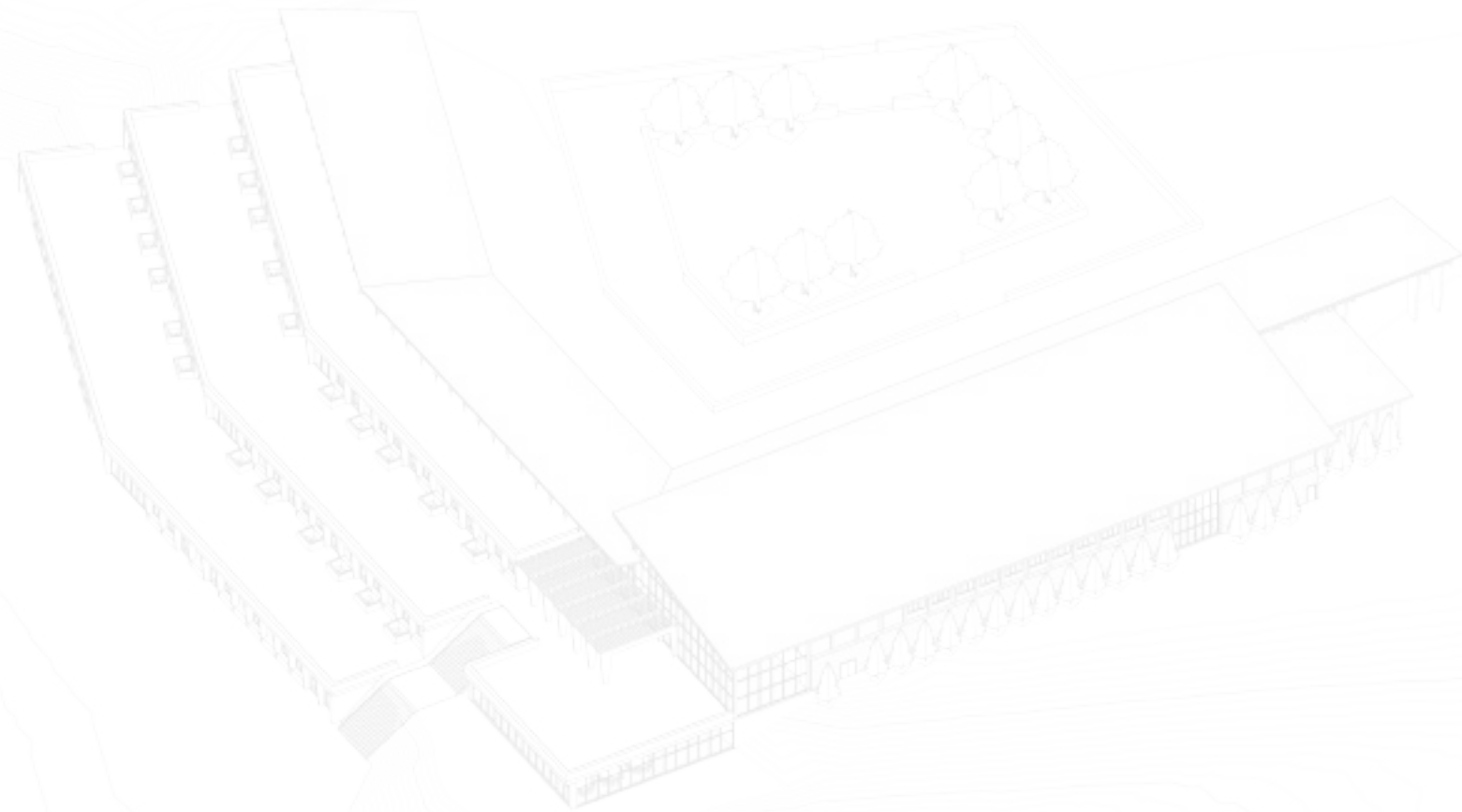


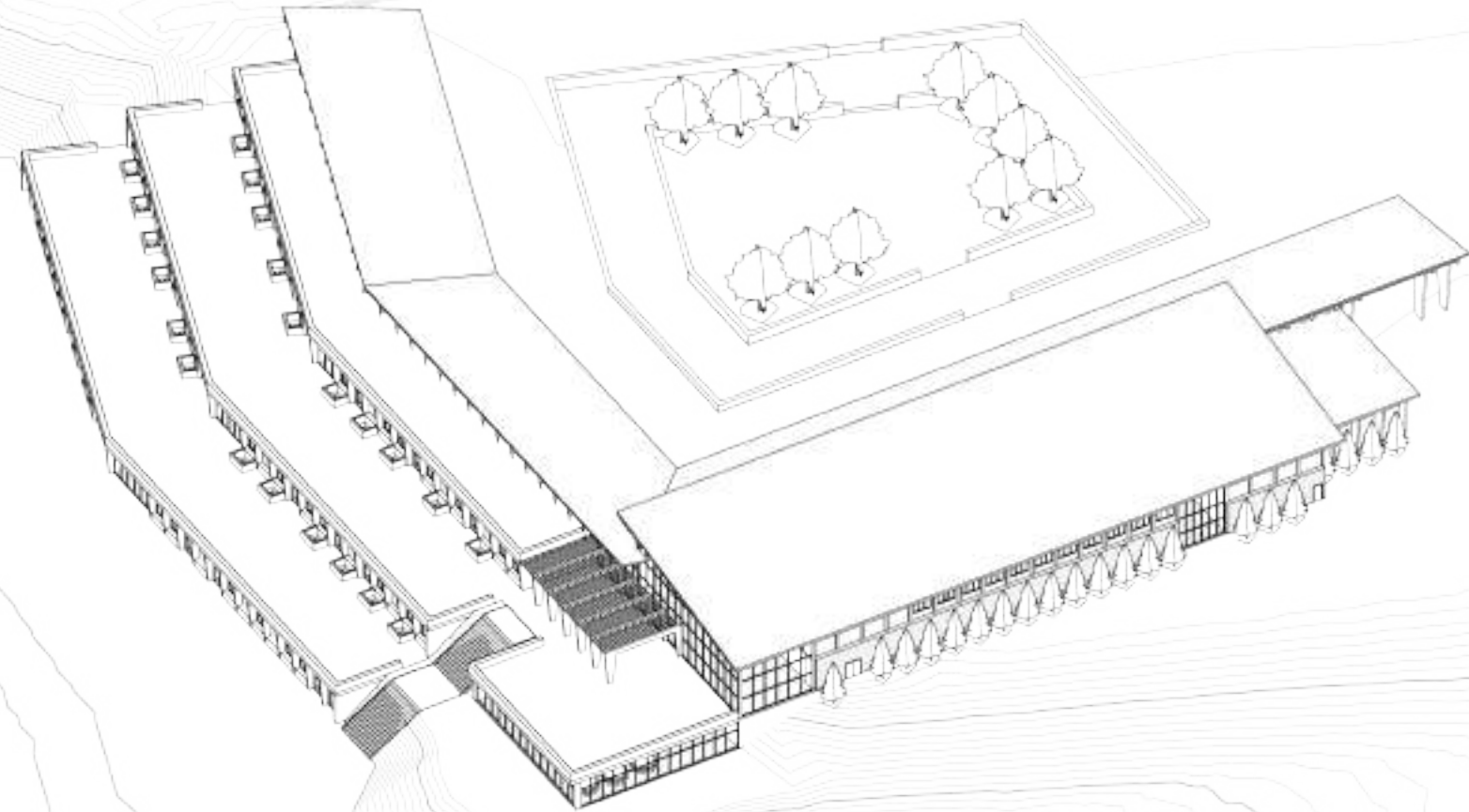
ALEC BARTZ

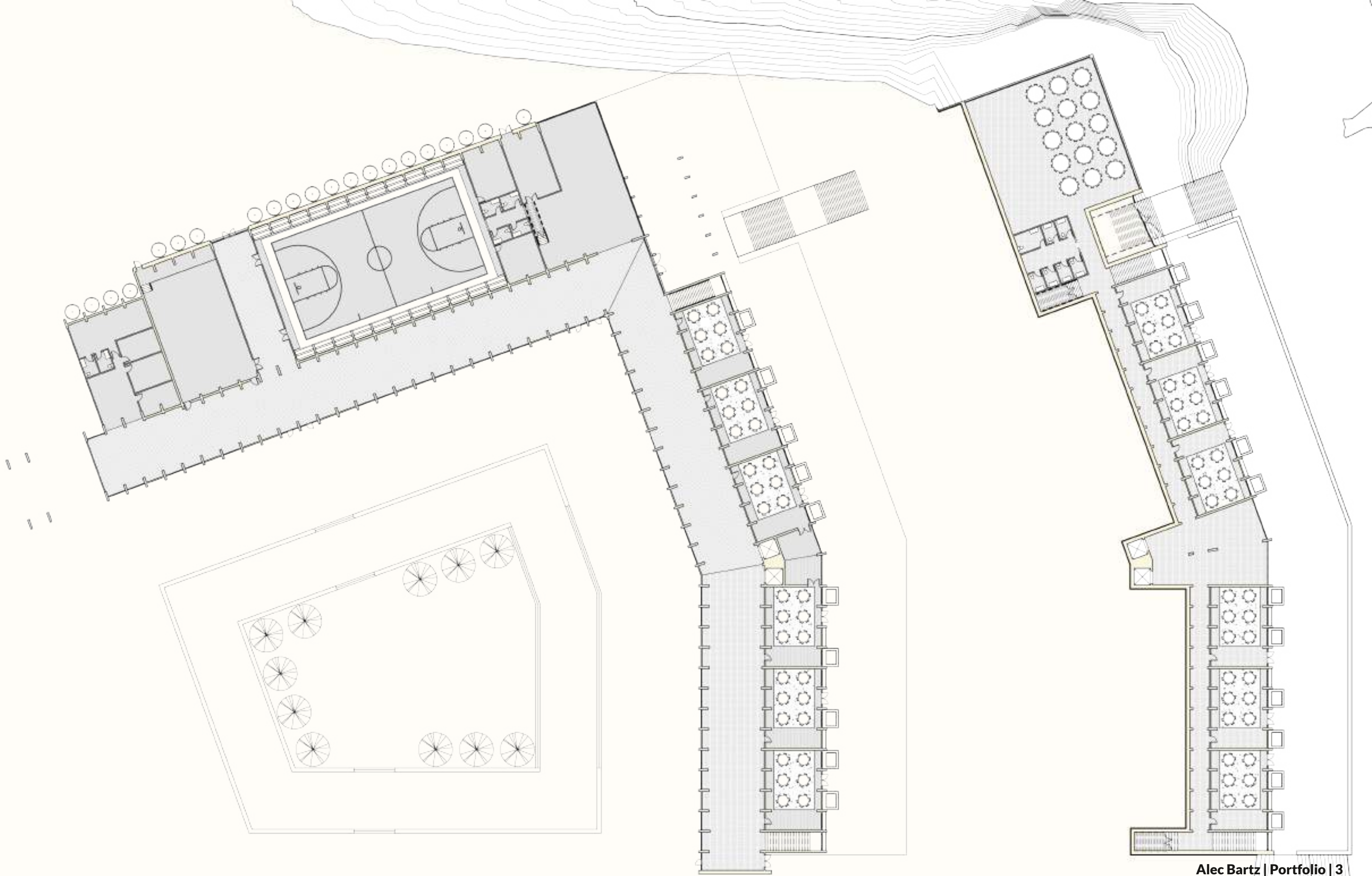
PORTFOLIO

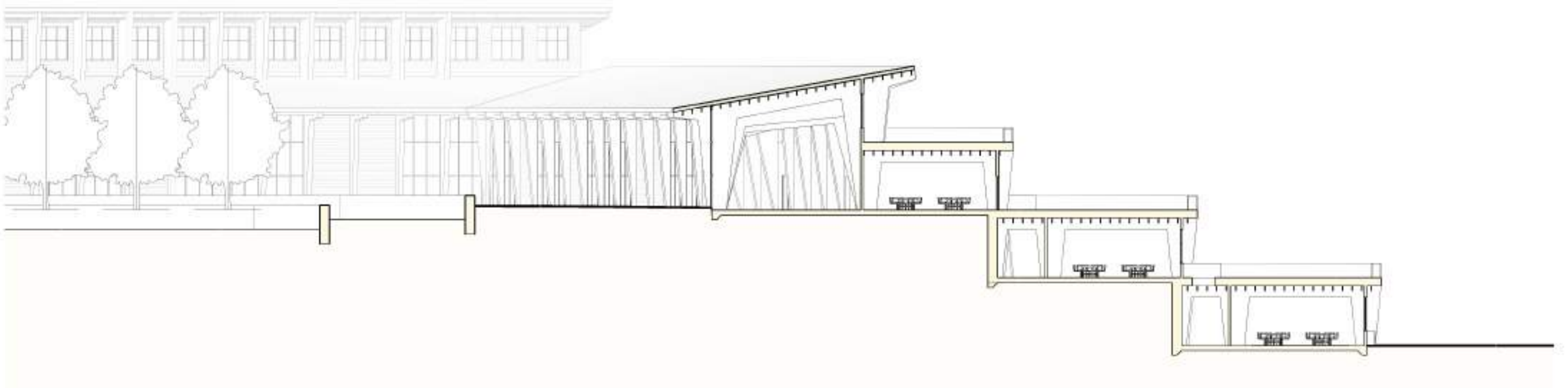
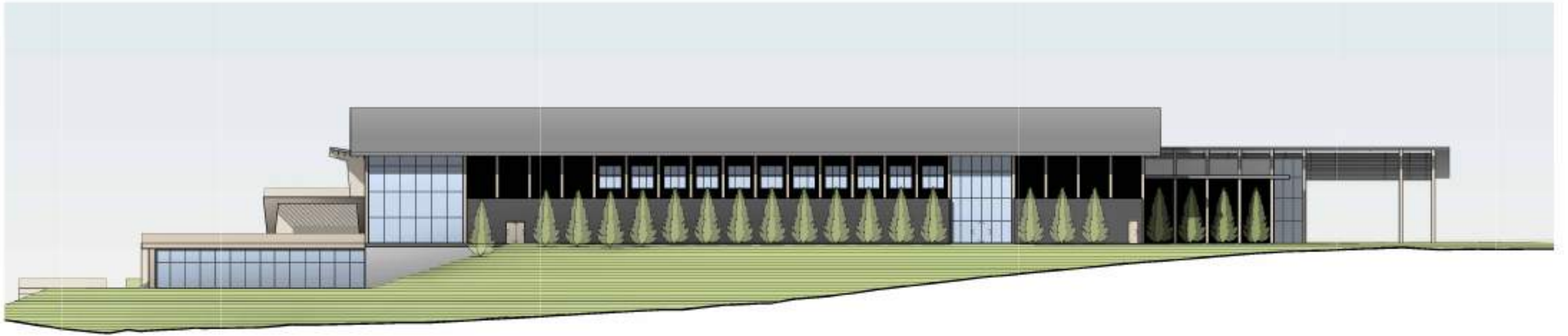


Riverwest Elementary School

The goal of the project was to design a new elementary school in the Riverwest neighborhood of Milwaukee which interfaced with the topography of the site. The school uses a tiered approach, where classrooms rest upon and open up to the roof of classrooms on the level below. The overall L shape of the building maintains visual and physical connectivity to the river as well as the topography.

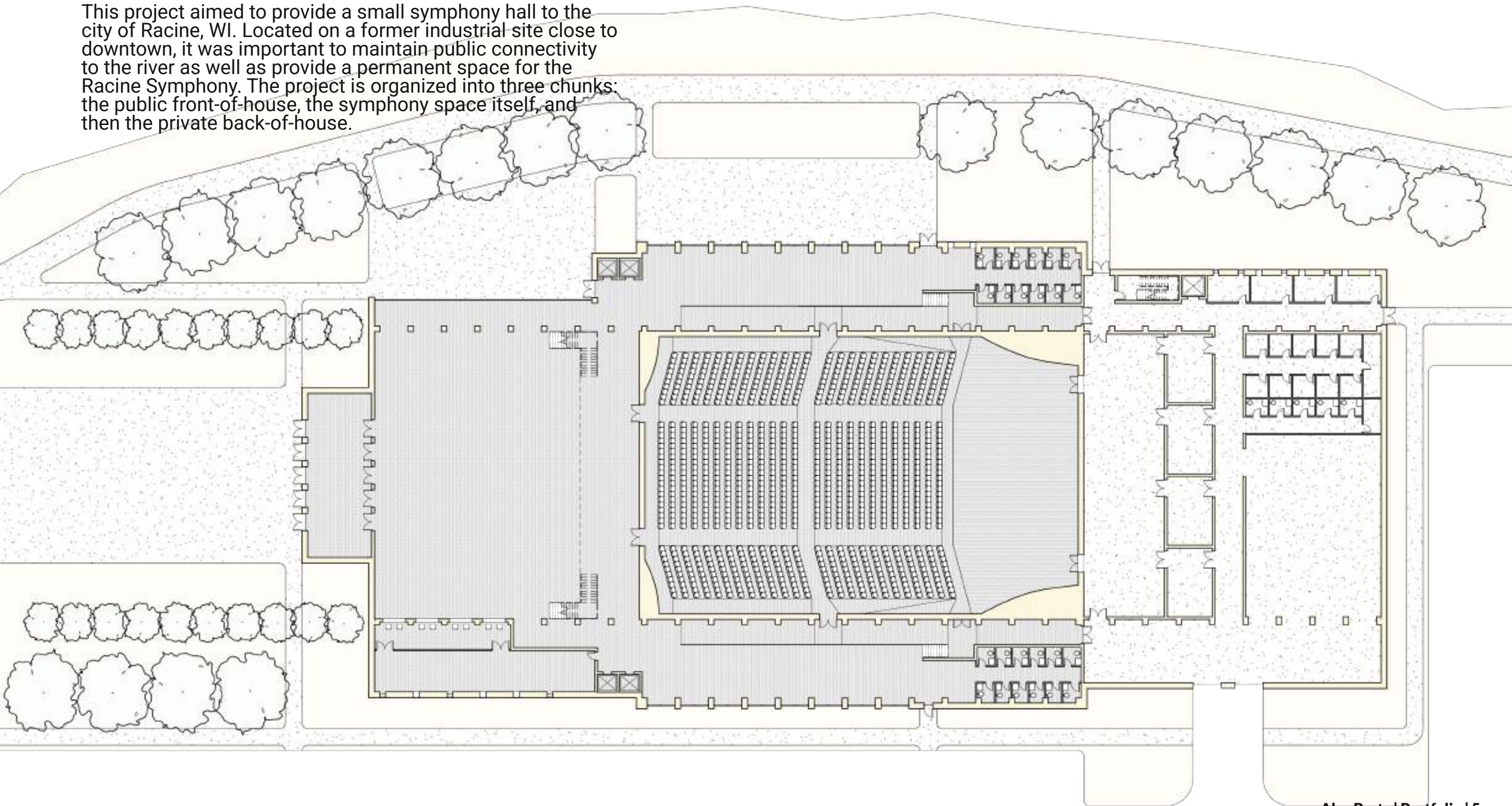


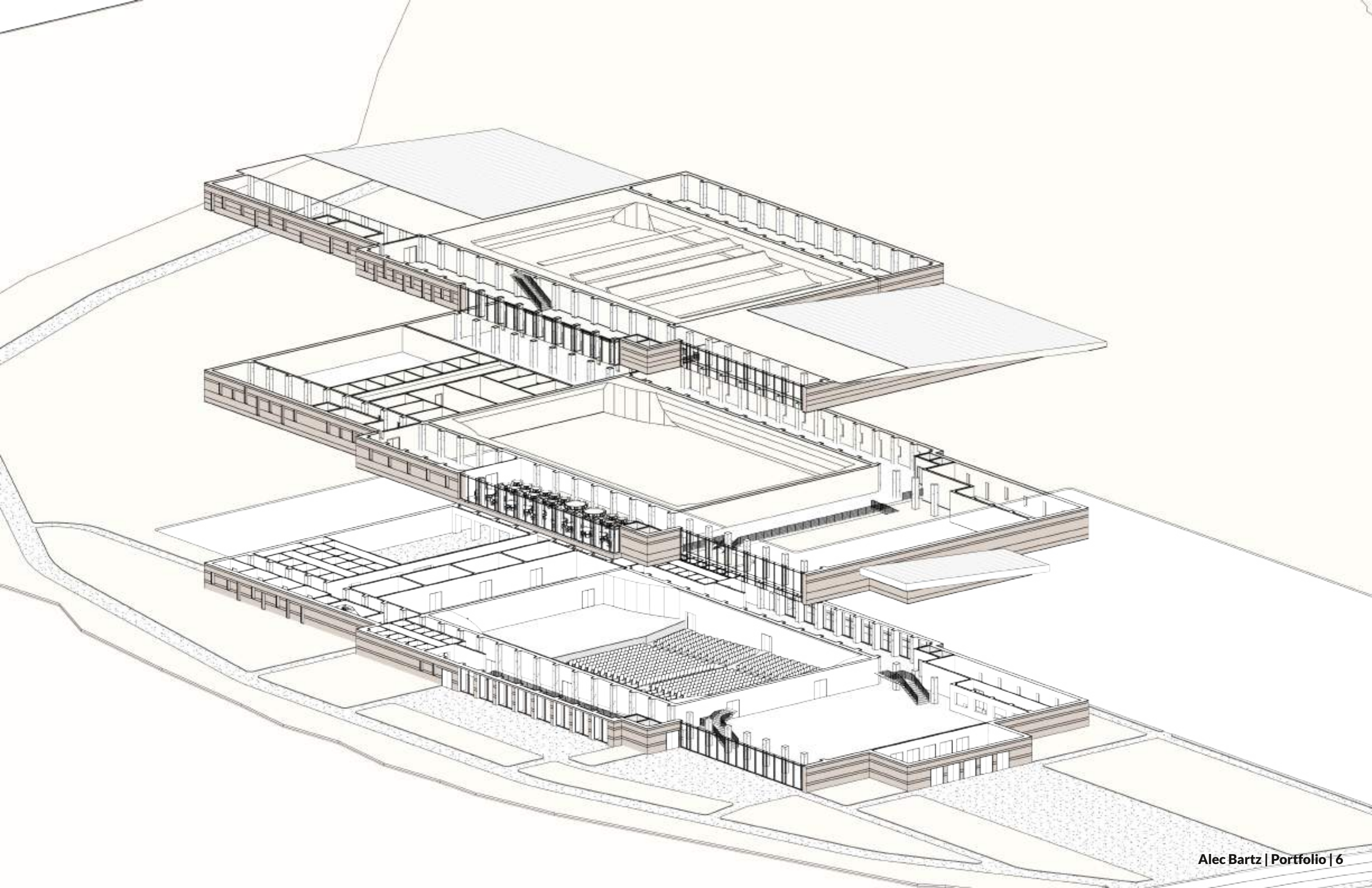


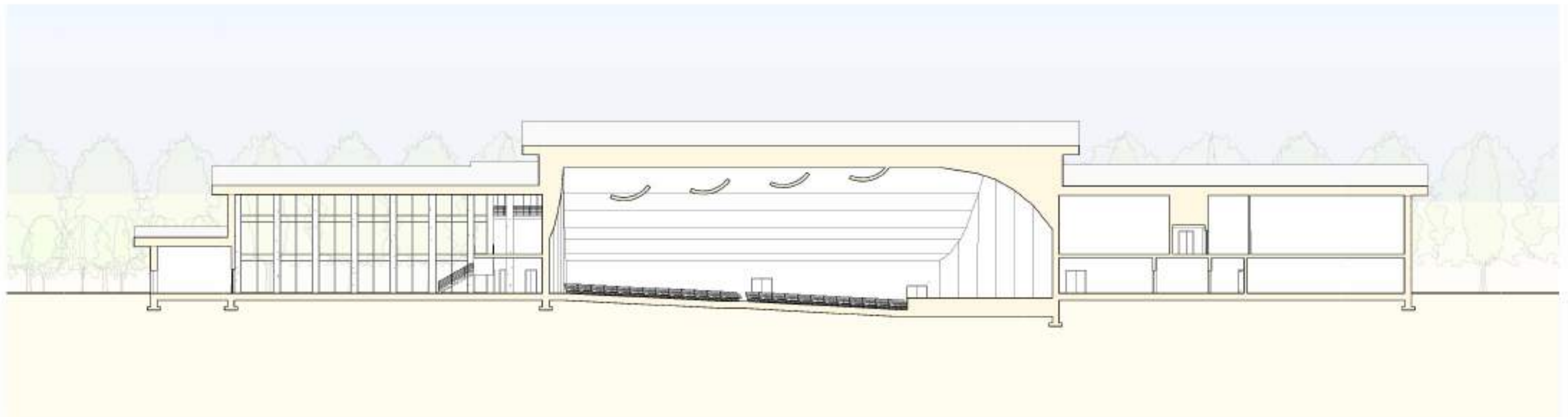
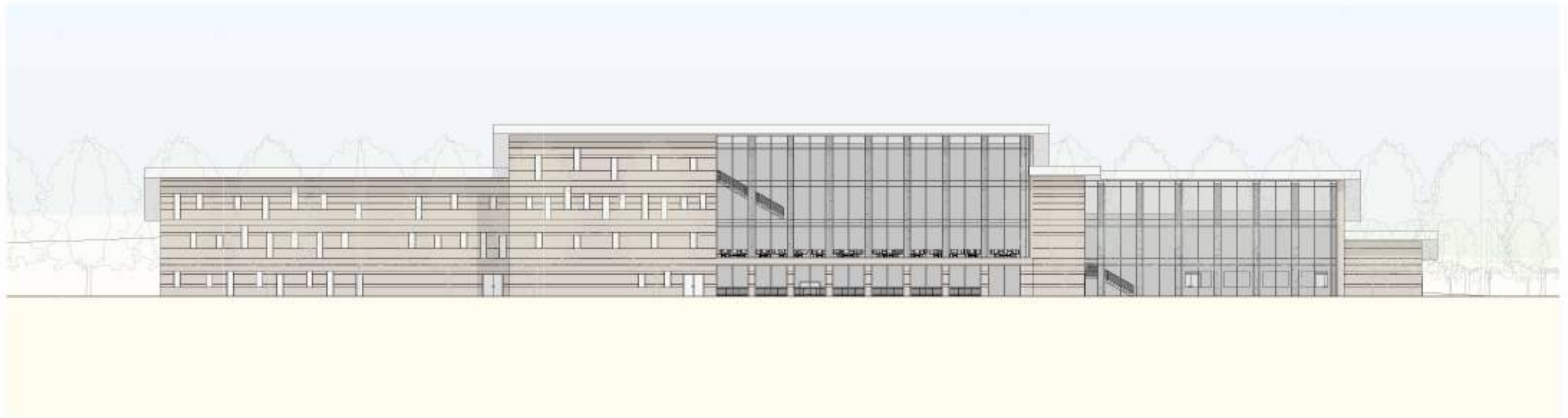


Racine Symphony Hall

This project aimed to provide a small symphony hall to the city of Racine, WI. Located on a former industrial site close to downtown, it was important to maintain public connectivity to the river as well as provide a permanent space for the Racine Symphony. The project is organized into three chunks: the public front-of-house, the symphony space itself, and then the private back-of-house.

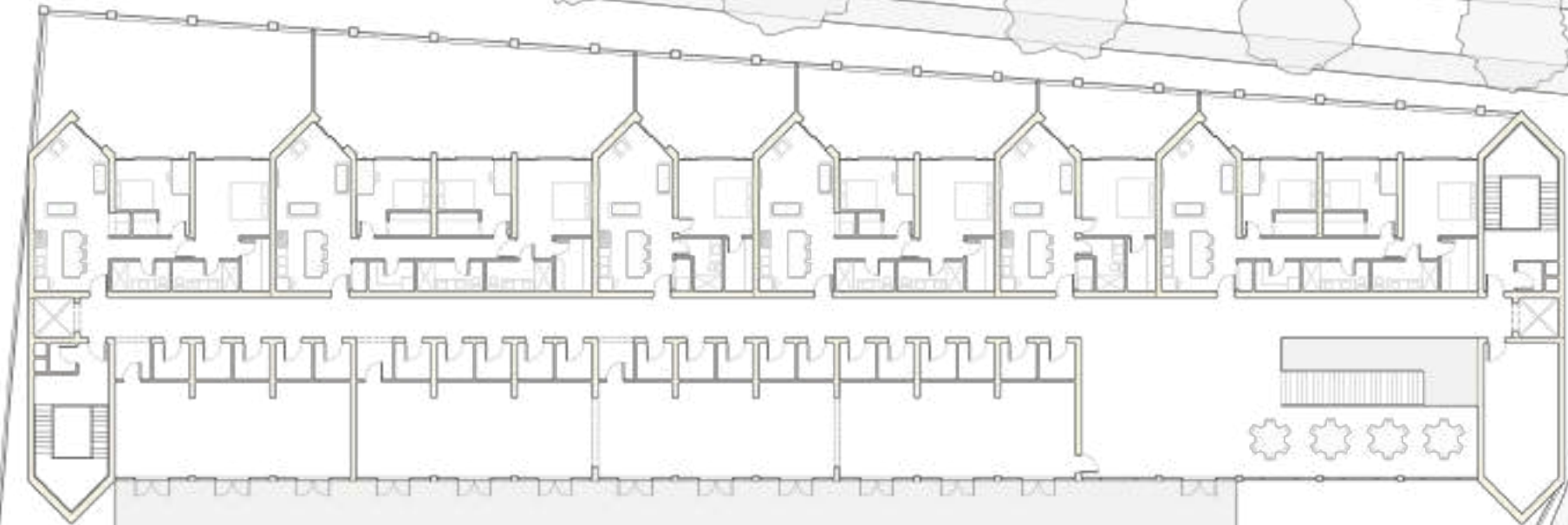


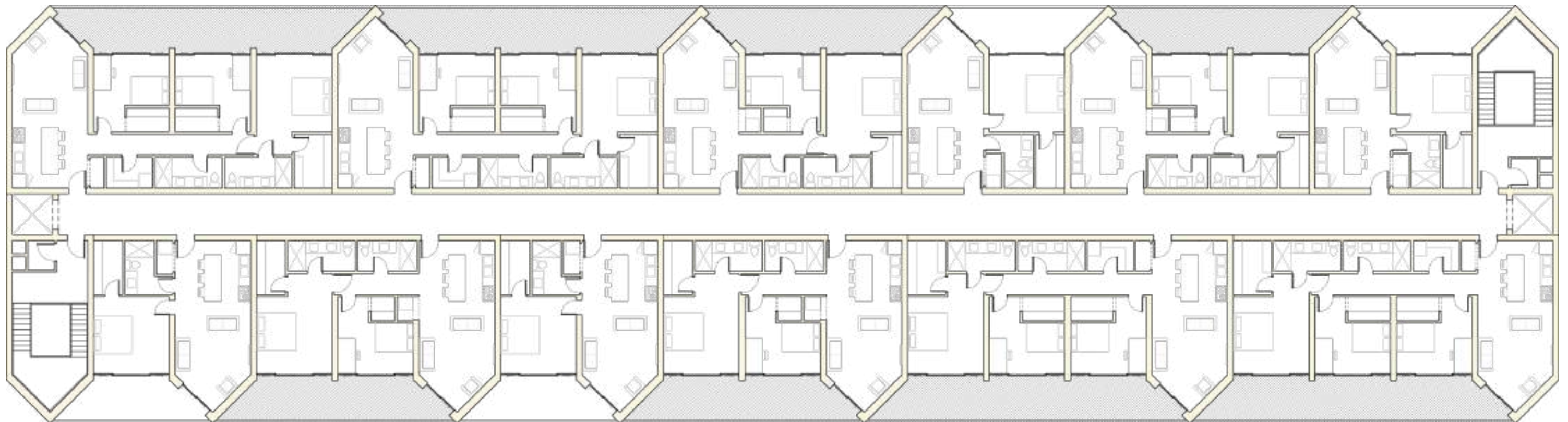
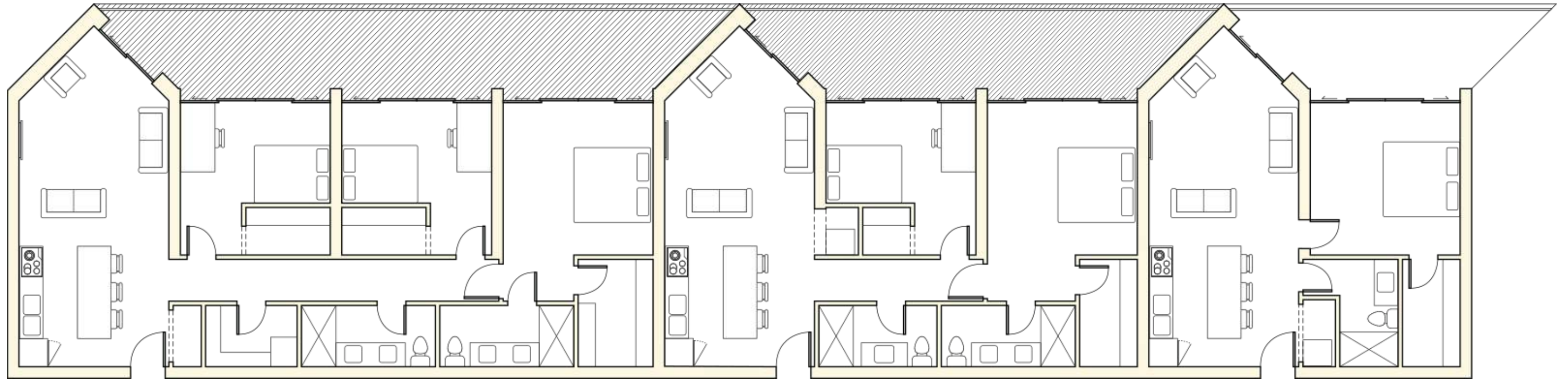


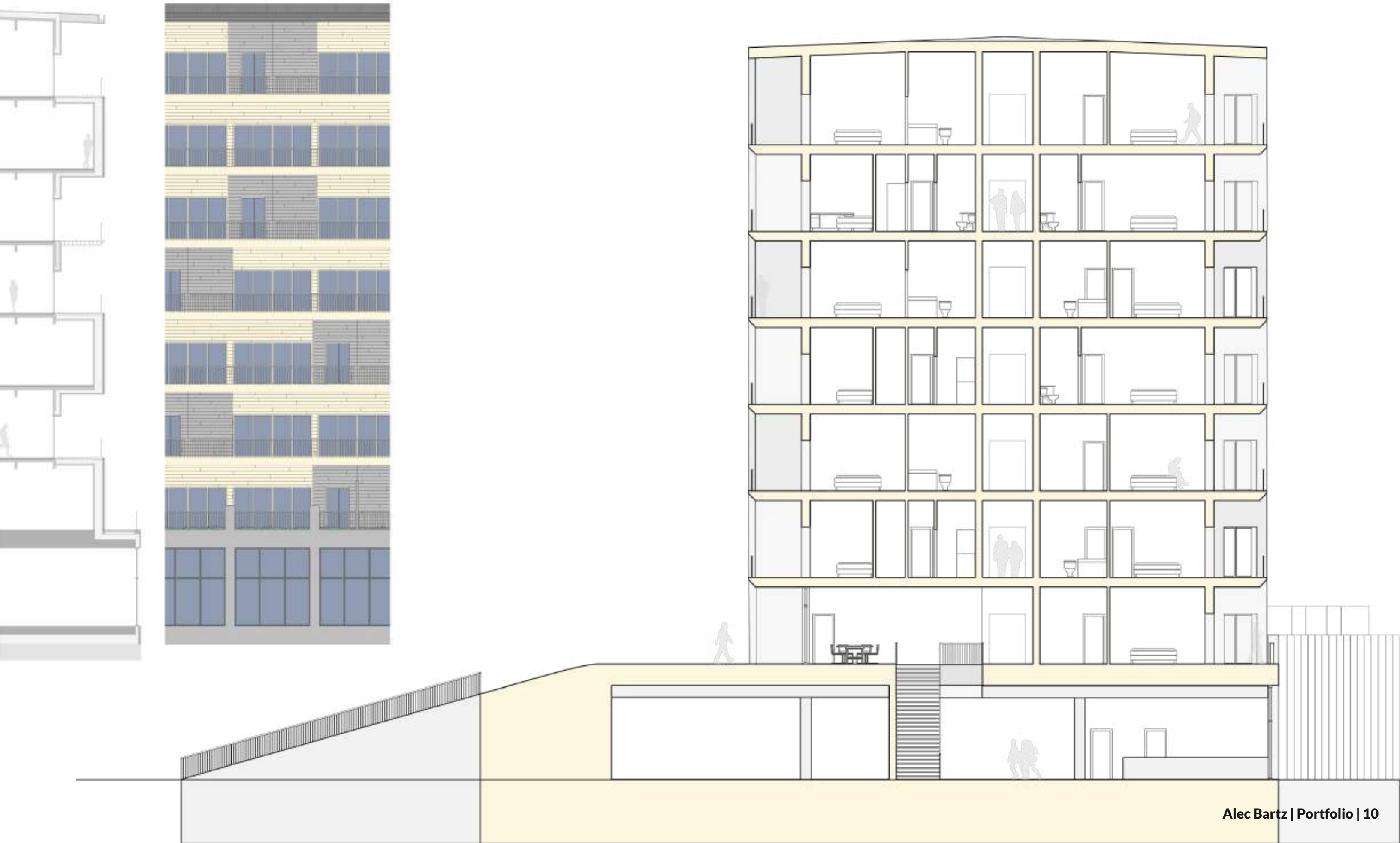


Modular Apartment

The primary goal was to create a modular apartment unit which could be quickly prefabricated and repeated across the building. Each unit features an angled primary living space which exits onto a private outdoor space for each apartment and provides privacy from neighboring units.

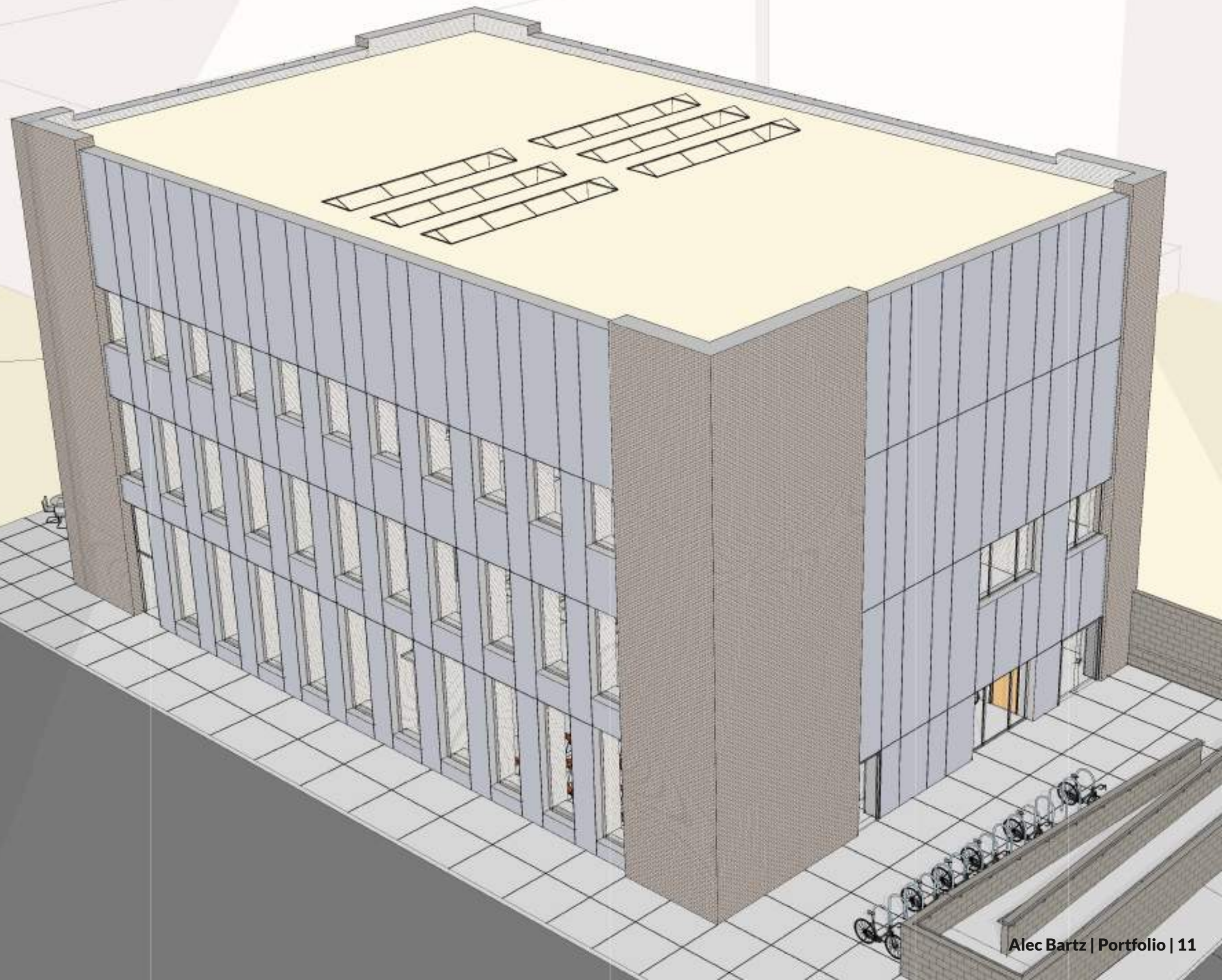


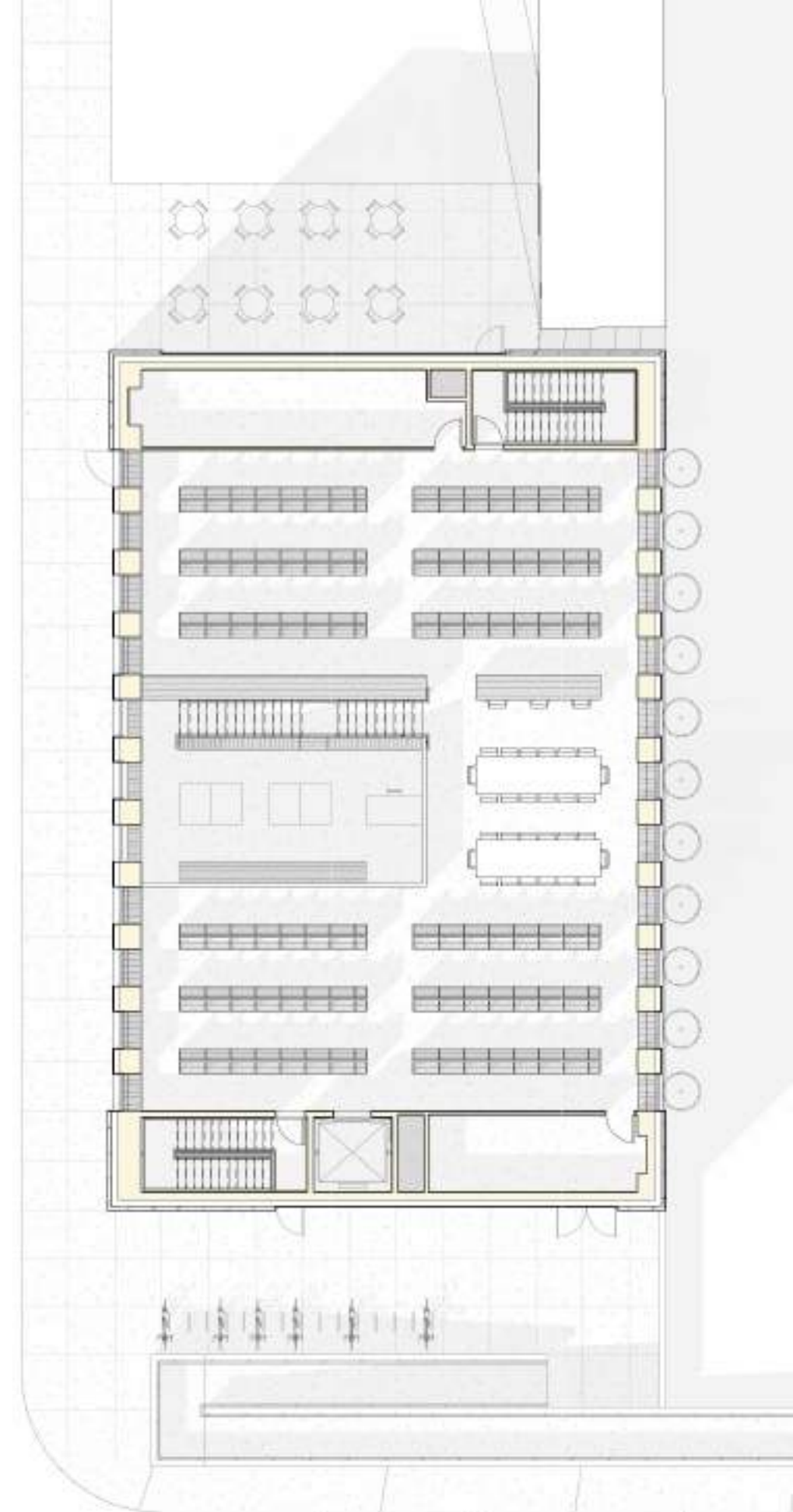
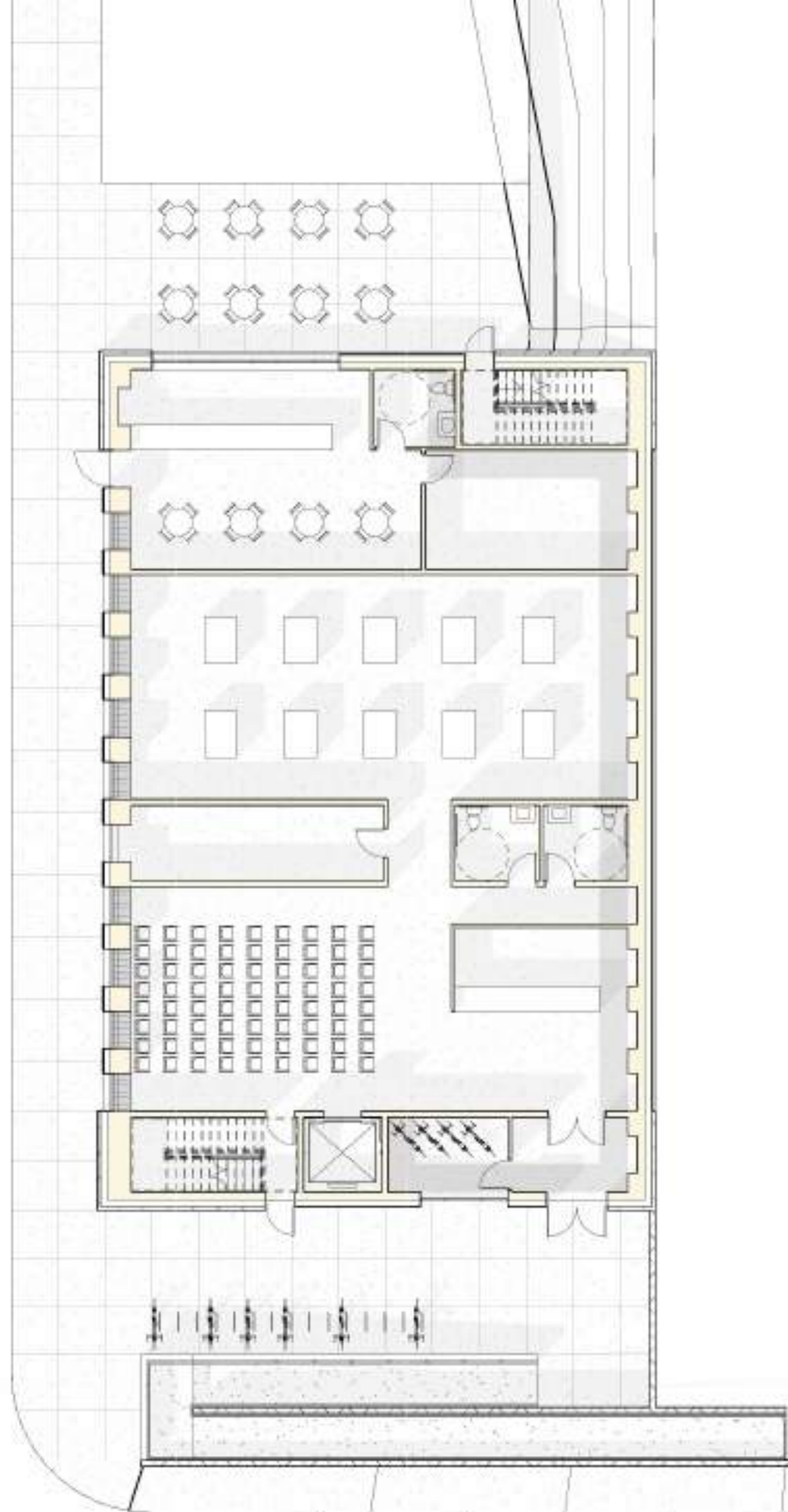


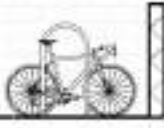


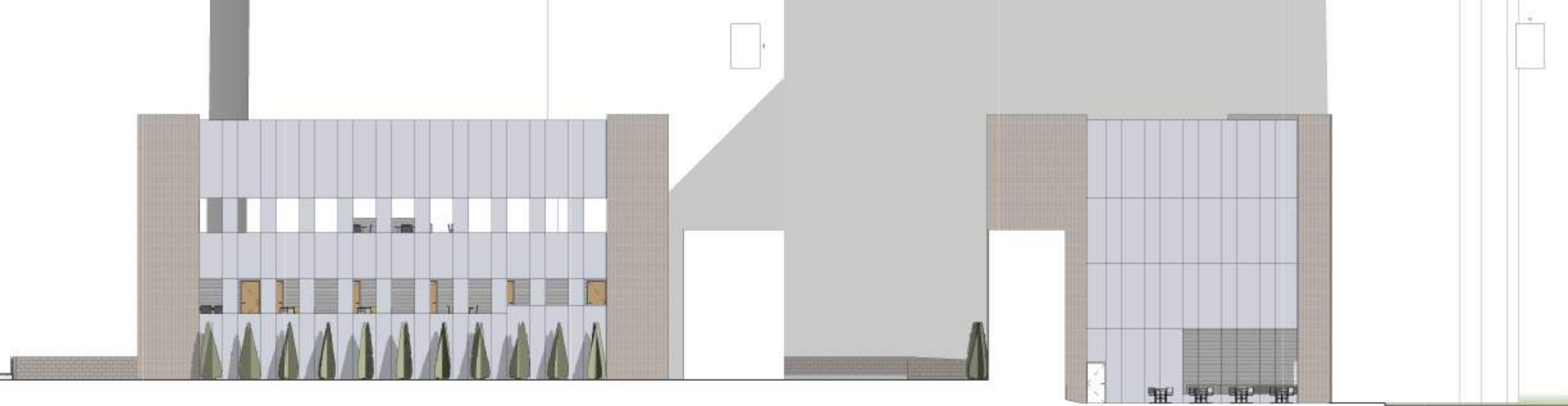
Rare Books Archive

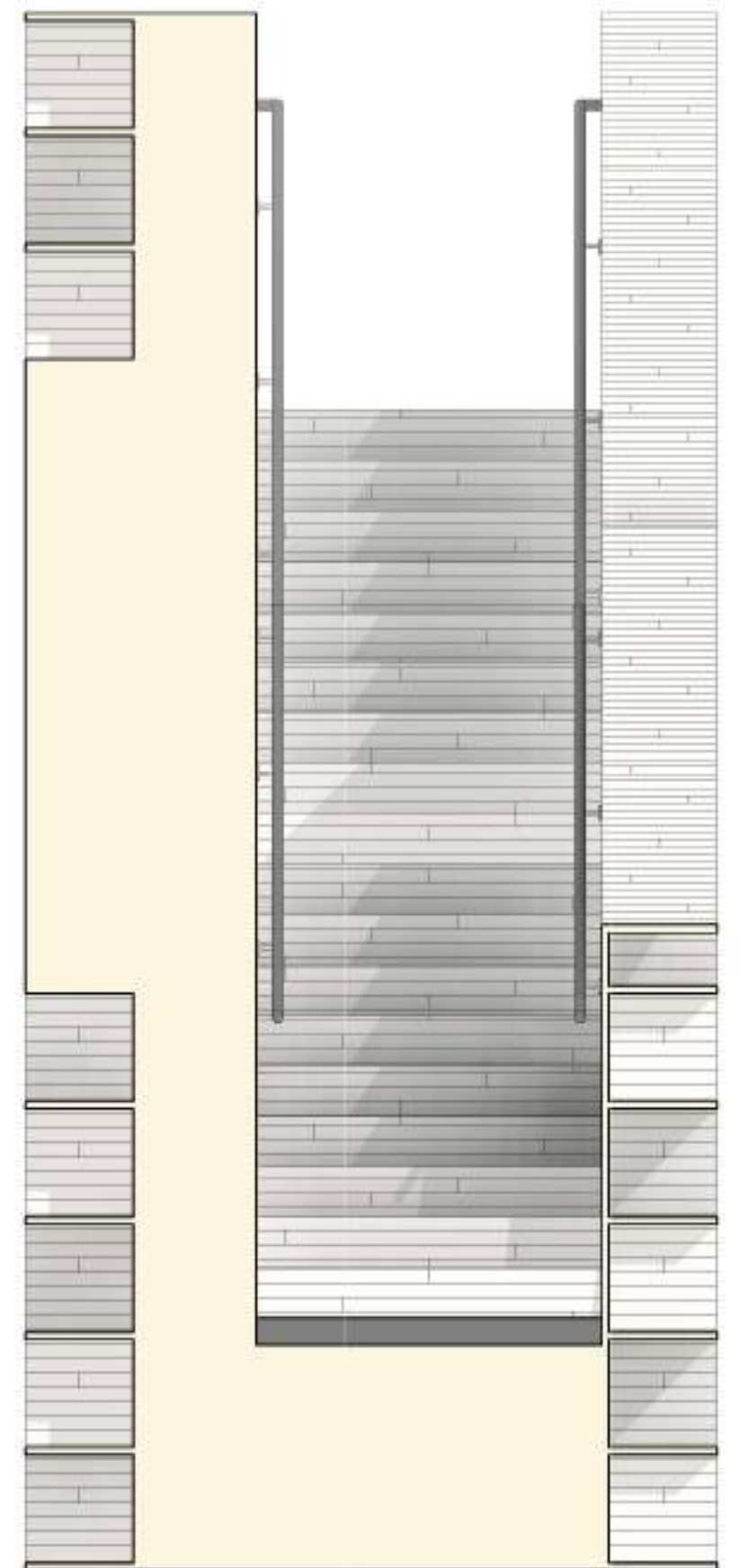
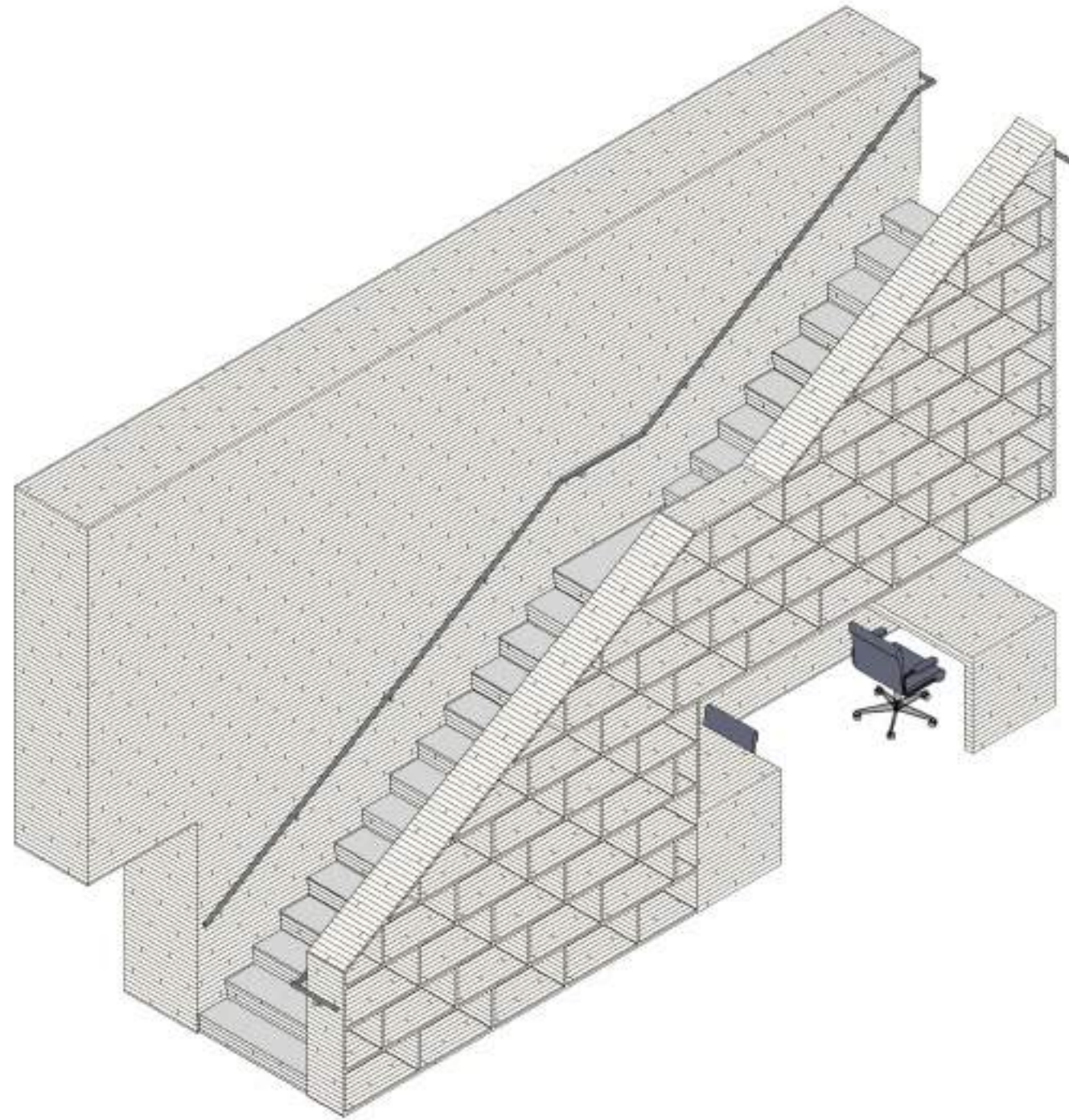
Although entitled the rare book archive, this project was designed to store a variety of archival material for the City of Milwaukee. The project had a number of much stricter guidelines, including close adherence to city zoning ordinances and the international building code. The building makes heavy use of CLT to reduce embodied carbon, and close attention was paid to building EUI, especially regarding insulation and building envelope.

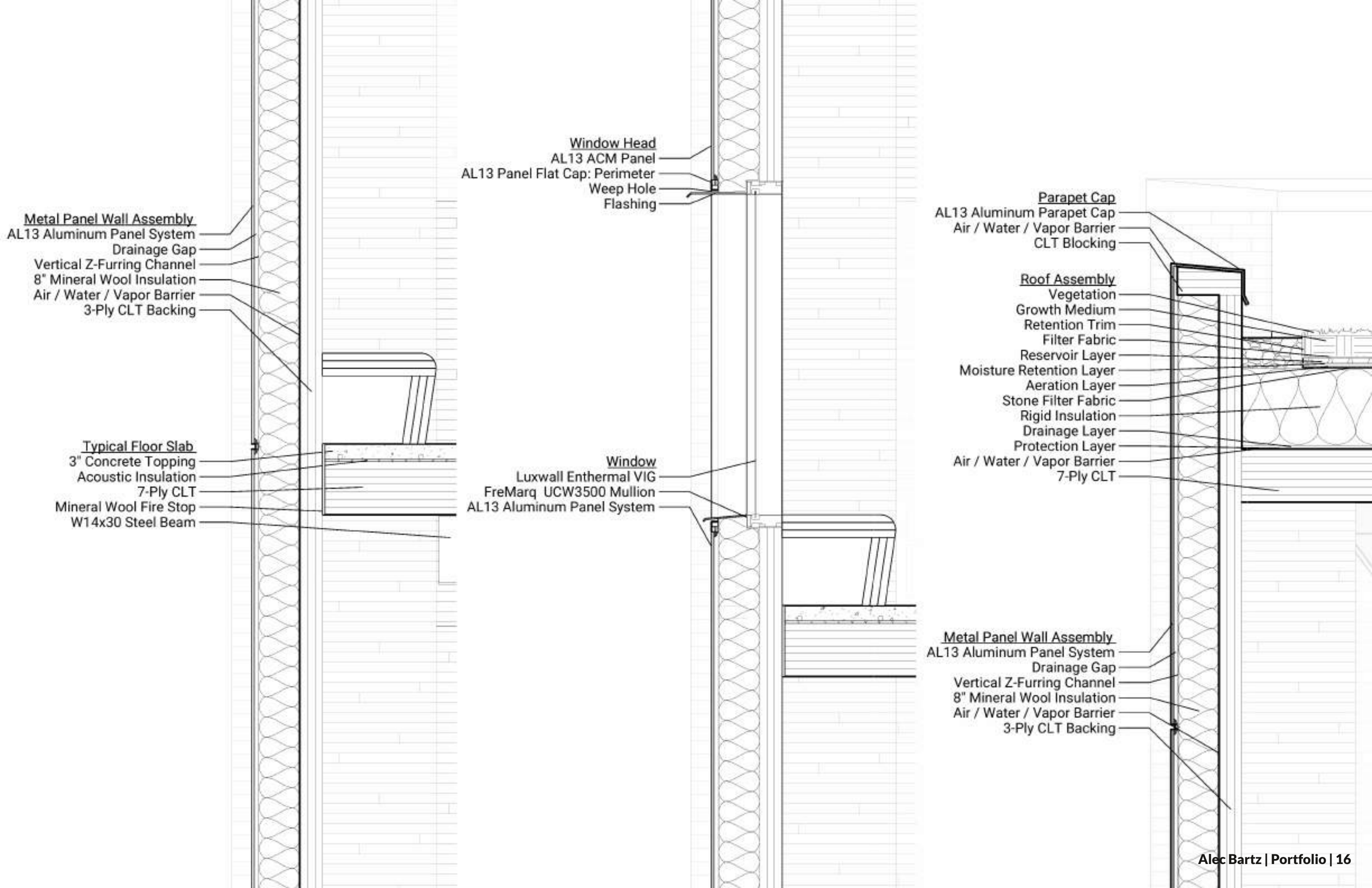












Metal Panel Wall Assembly

AL13 Aluminum Panel System
Drainage Gap
Vertical Z-Furring Channel
8" Mineral Wool Insulation
Air / Water / Vapor Barrier
3-Ply CLT Backing

Typical Floor Slab

3" Concrete Topping
Acoustic Insulation
7-Ply CLT
Mineral Wool Fire Stop
W14x30 Steel Beam

Window Head
AL13 ACM Panel
AL13 Panel Flat Cap: Perimeter
Weep Hole
Flashing

Window
Luxwall Enthermal VIG
FreMarq UCW3500 Mullion
AL13 Aluminum Panel System

Parapet Cap

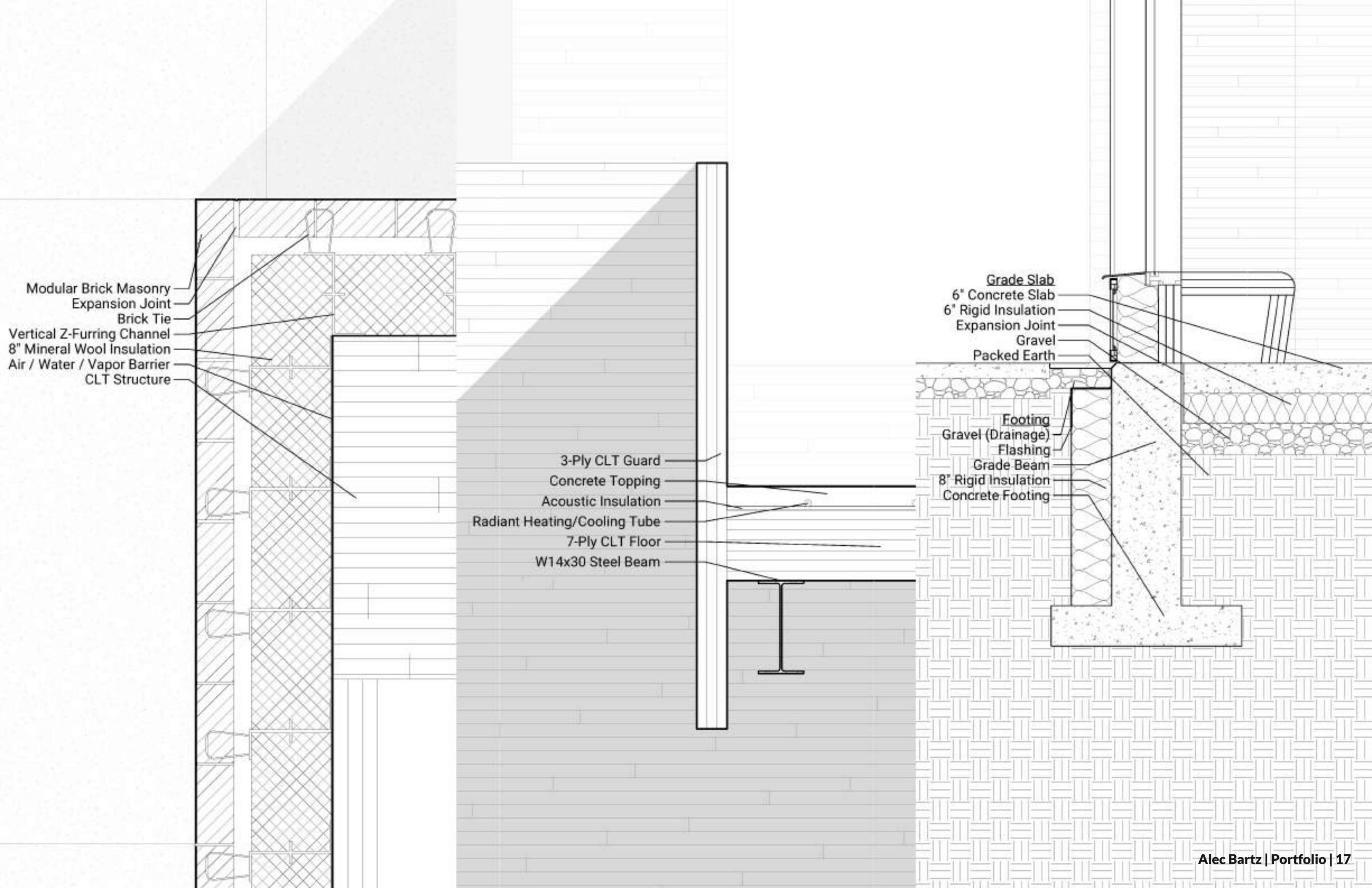
AL13 Aluminum Parapet Cap
Air / Water / Vapor Barrier
CLT Blocking

Roof Assembly

Vegetation
Growth Medium
Retention Trim
Filter Fabric
Reservoir Layer
Moisture Retention Layer
Aeration Layer
Stone Filter Fabric
Rigid Insulation
Drainage Layer
Protection Layer
Air / Water / Vapor Barrier
7-Ply CLT

Metal Panel Wall Assembly

AL13 Aluminum Panel System
Drainage Gap
Vertical Z-Furring Channel
8" Mineral Wool Insulation
Air / Water / Vapor Barrier
3-Ply CLT Backing



Modular Brick Masonry
Expansion Joint
Brick Tie
Vertical Z-Furring Channel
8" Mineral Wool Insulation
Air / Water / Vapor Barrier
CLT Structure

3-Ply CLT Guard
Concrete Topping
Acoustic Insulation
Radiant Heating/Cooling Tube
7-Ply CLT Floor
W14x30 Steel Beam

Grade Slab
6" Concrete Slab
6" Rigid Insulation
Expansion Joint
Gravel
Packed Earth

Footing
Gravel (Drainage)
Flashing
Grade Beam
8" Rigid Insulation
Concrete Footing